



GINNY CONROW

Two day intensive workshop

Throwing and Altering Porcelain Forms
Glazing – Hands on Session, Airbrushing on
Two and Three Dimensional Surfaces



Ginny explains:

“This two day workshop (a sort of everything I’ve learned in thirty-three years compressed into two days!!) concerns itself with the particular qualities and demands of porcelain but is instructive for potters using any kind of clay --how to throw thin porcelain forms; how to throw large forms in two, three, or four stages, and how to alter and re-form the wet clay. Also how to trim, cut, and finish the drying clay.

The first day begins with a slide show I call Development of style and form: a 30-year retrospective. Then I throw a variety of forms (requests from the slide show) while talking about glazes at cone 10, both gas-fired reduction and oxidation crystalline, as well as at cone 6, sharing glaze formulas, and answering questions raised by the slide show and the work in progress, and the day flies by!

Day 2 begins with a slide show of work by Washington State Potters, followed by finishing the work from Day 1. The afternoon includes glazing demonstrations: Discussion about kinds of airbrushes and compressors as well as how to use an airbrush and airgun with stains and glazes on porcelain, stoneware and tiles as an accent or total design. Then workshop participants try some hands on practice with air brushes and air guns.”

Each participant should bring some bisqued pieces, if they are interested in trying the airbrush/airgun on the last afternoon.

For further information about Ginny’s work, or simply to view her outstanding porcelain pieces, visit <http://www.conrowporcelain.com/>

Where: Tasmanian Potters Society Studio

Cosgrove High School

When: April 8th and 9th, 9:00am to 4:00pm

Bring: A plate of food to share for lunch

Some bisqued pieces, if you are interested in trying the airbrush/airgun on Sunday afternoon.

Costs: **Members:** \$60.00 for 2 days / \$40 for 1 day.
Student members \$50 for 2 days / \$30 for 1 day
Non-members: \$100 for 2 days / \$50 for 1 day

Bookings by the 1st April. Please telephone Janine Davison Ph. 6229 4365 or Yulia Szalay Ph. 6228 4258

Raku Firing

BERES TAYLOR

Beres has once again invited us to his wonderful property in Collinsvale for a Raku firing.

Raku Firing with Beres Taylor
Fast becoming a favourite summer event!

Sunday 12th February 930am–4pm

Please bring your bisqued pots (maximum 4), lunch to share, old newspapers and if you can a bag of sawdust.
Cost \$20.

The Tasmanian Potters Society and Beres will supply all other equipment and glazes.

Collins Cap Ceramics
29 Funslow Rd, Collinsvale
www.capceramics.com

For further information and bookings please contact Beres
Ph. 6239 0151 or 0407 255 845

Committee 2005 – 2006

Meetings 1st Tue of the month...All welcome

President	John Watson	6231 1696
Vice President	Beres Taylor	6239 0151
		0407 255 845
Secretary	Richard Whitaker	6228 7308
Minutes Secretary	Anna Williams	6229 5115
Treasurer	Tom Hartley	6239 6475
Newsletter Editor	Jane Tyler	6239 6642
Web Page Officer	Beres Taylor	6239 0151
Members database	Tom Hartley	6239 6475
Workshop Officer	Yulia Szalay	6228 4258
	Janine Davison	6229 4365
		0417 103 513
Studio manager	Jude Maisch	6243 0195
Library manager	Juanita Stevens	6244 3296
Exhibition Officer	Sally Warner	6224 1104
Committee	Dorice Griffiths	6243 9908
	Paula Woodward	62281709

The editor - Jane

Welcome to the New Year 2006.

Artists Forum - Sullivan's Cove Waterfront Authority.

Last Tuesday at the School of Art was the first of a series of consultations with art and craft people who are interested in having a say about what happens to Sullivan's Cove. The Sullivan's Cove Area goes from the CSIRO to just past the Cenotaph and inland to City Hall. The first meeting explored peoples' dreams for the area – big picture stuff. It looks like they are interested in what the arts community have to say! If you want to get involved then come to the next forum. For more information please contact the Sullivan's Cove Waterfront Authority or contact me

Jane Tyler

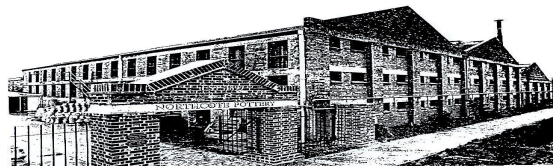
NORTHCOTE POTTERY

MANUFACTURING AND SUPPLYING POTTERS' NEEDS FOR OVER 105 YEARS

Proudly supporting the work of the Tasmanian Potters' Society in its promotion and support of potters and pottery practice in Tasmania

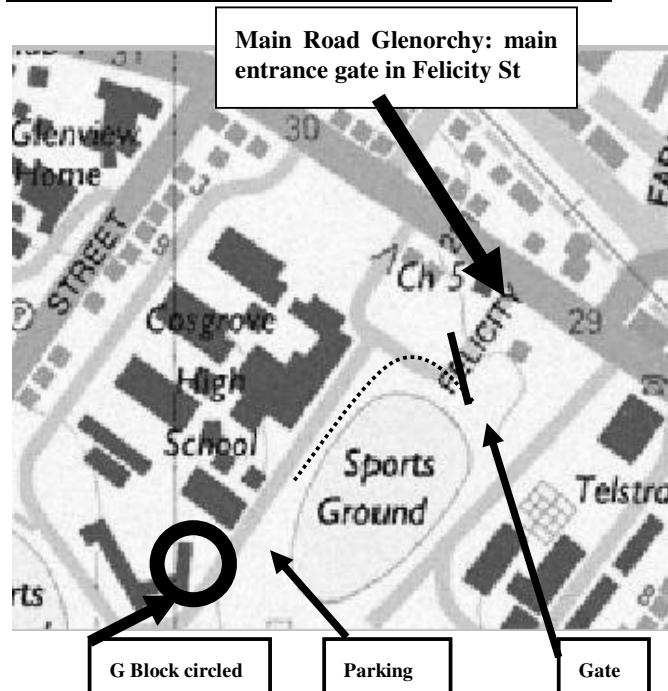
Our representatives in your state

Tasmanian Ceramic and Pottery Supplies, Derwent Ceramics or Entrepot Art Products



NORTHCOTE POTTERY 85A CLYDE STREET THORNBURY 3071 PHONE: 9484 4580 FAX: 9480 3075
MONDAY TO FRIDAY 8.30AM - 5.00PM SATURDAY 9.00AM - 4.00PM CLOSED SUNDAY

The studio at Cosgrove High School see map for details



Entry is via the main gate in Felicity St, next to Motors Car Yard and come up the road to G block circled on the map. Alternatively park in front of the admin block at Cosgrove and walk up through the covered walk to the back to G block.

Booking for the **kiln and keys** are available at
Derwent Ceramics

16B Sunderland St, Moonah Ph: (03) **6278 3208**

Open: Mon-Fri 9:00-5:00

Classes in the STUDIO.

Taught by Jude Maisch and Suzi Tyson, the classes are a great opportunity for members and friends to learn some new skills (handbuilding or wheel) and have some fun.

Reasonable costs, tools provided, all clay and glazes supplied (paid for in clay cost). Your tutors will fire the work.

Monday Evenings 7.30-9.30 pm in the studio

Spaces available

Term and casual rates

Bookings and enquires phone Jude on 6243 0195 or Suzi on 6239 1311

A children's class is also planned, please telephone Jude on 6243 0195 for more information

POTTERS SOCIETY STUDIO

ACCESS, DETAILS AND CHARGES

The STUDIO IS THE FIRST DOOR ON THE LEFT OF G BLOCK, which is towards the top left of the school grounds. The Potters Society banner is clearly visible across the front windows. Please refer to the map on page 2 of the newsletter.

The STUDIO is accessible by KEY. Weekend access requires a key set with a gate key. Several sets of keys are available at Derwent Ceramics (sign them out via the book). They must be returned on the same day or if over a weekend on the following Monday. Suzi Tyson, John Watson and myself (Jude Maisch) also hold keys.

There is an ALARM SYSTEM. The alarm instructions are written on the inside of the metal box housing the alarm inside the first door. The code details are with Derwent Ceramics and the key holders. Access to the studio requires you to open the box, key in the code followed by OFF. The code must be typed in and then ON when leaving. If this is forgotten the Security Company bills the Society. .

The keys are also to the TOILET/WASHROOM at the end of the corridor on the left (through the kitchen).

The KILNROOM is a separate room within the studio to the left. The kiln is a small electric Tetlow with a harco controller and is for use by members who have shown that they can programme it. Please have one of the committee run through it with you, or organize to meet me there before a Monday class or before a committee meeting. If you use the kiln please fill in the kiln book in the studio. The KILN needs to be **BOOKED IN ADVANCE AT DERWENT CERAMICS** to save doubling up on use. The cost is \$10 for a bisque firing and \$15 for a glaze firing. The money can be left in an envelope with details on the front in the kiln room, or a cheque posted to the treasurer at P.O. Box 82, New Town, 7008.

The studio has SEVERAL WHEELS, a large SLAB ROLLER, many TOOLS, a large POTTERY COLLECTION to view and an extensive LIBRARY. There are also VIDEOS. Members may borrow at any time (by accessing the studio via a key, or during meetings or workshops.) Books, videos and journals (but not the current journals) may be borrowed for up to 3 weeks. Sign them in the library-borrowing book and cross off when they are returned. There are a number of overdue books. Please have a look on your shelves and return them they may have been forgotten. Junita is ready to do an inventory of our library. Any library suggestions contact Junita Stevens (62443296).

There are small STUDIO USE CHARGES: \$2 a half day and \$4 full day for members. A non-member accompanying a member is \$3 and \$5. For members renting the studio for a one-off class, demonstration or function it is \$24 a day. For non-members this charge is \$50.

There is a PUGMILL available for hire. The charge is \$10 week, with a maximum of 3 weeks. Return it to the studio cleaned. Alternatively it can be used in the studio. Fill in pug mill borrowing in the studio use book.

PLINTHS can be borrowed for exhibitions. They need to be booked in advance (contact Jude). The cost is \$5 per plinth per month or part of a month, plus a \$50 bond payable up front. The bond is returned after the plinths are returned in the original order. If scratched etc they will need repainting with white paint.

There is a STUDIO USE BOOK inside the door. Please fill it in and pay studio money (in box inside kiln room). If you wish to accrue charges and pay monthly by cheque to the treasurer that is O.K.

Any comments and suggestions re the studio are welcome.
Hope to see you at the working bee!!

Jude Maisch

Artist Profile



Stephanie Pfennigwerth won the Tasmanian Ceramic and Pottery Supplies' Award for Excellence in the Society's annual exhibition in November last year for her delightful sculpture, "Horse". We asked Stephanie to write a few paragraphs about the making of the piece....

My reason for creating "Horse" was simple: I like horses! This particular Horse started life as an exercise for a TAFE module taught by Dawn Oakford. I had to make a coil-built freestanding portrait, and since I'd already made several smaller horses—trotting, doing handstands, dancing with ducks and so on—it seemed logical that I should embark on a larger version. Dawn understands my obsession with animals and suggested I look at the work of the German Expressionist Franz Marc (1880–1916) for inspiration. I would like to think that Marc's love for his animal subjects and his empathic, yet abstract style in some way influenced my work. While this is probably wishful thinking, there is no doubt that my childhood travel experiences in China also seeped out of my subconscious, particularly during the glazing process.

But no matter how much one likes horses, there's no escaping the fact that they are not especially well designed. The average horse is some 450 kg of muscle and bone balanced on four spindly legs—each of which is tipped with just one toe. These physical challenges became apparent during the construction of my Horse. First, the body was coiled and pinched into a bagpipe shape and tucked under my arm while I contoured the shoulders, belly and quarters. (Toilet paper was stuffed into the bagpipe to prevent it from being squashed flat.) A narrow slab wound up from the shoulders to form the neck, and a solid lump became a head with the help of some high-tech cotton ear buds. Naturally, the ears were also shaped with ear buds.

Meanwhile, four thick, solid legs of clay were coiled and set aside. I let the legs dry a little because bitter experience has taught me that soft clay legs will collapse under

pressure and make a horse resemble a hippo. When these legs were ready, I turned poor Horse upside down and stuck them on—she looked very much like an ex-Horse at this stage. I shaped the hocks, knees and other bumpy bits and then turned her upright and balanced her on a solid block of clay. While she hovered in mid-air I further refined her legs and hooves, adjusted her head carriage and stuck on her coiled tail, which was also supported on a block of clay. Thus Horse remained for a couple of weeks, draped with damp cheesecloth and up on blocks like a car at the mechanics. Eventually I decided her legs were strong enough to support her drier, lighter body. Slowly I took slices off the supporting blocks until her hooves touched the ground...and when she didn't crumple or do the splits I breathed again, and stuck her on the shelf to dry.

I would like to sincerely thank the judges, the Tasmanian Potters' Society (Southern Branch) and Tasmanian Ceramics and Pottery Supplies for their generous support.

Stephanie Pfennigwerth

Tasmanian Ceramic & Pottery

SUPPLIES

For all your pottery and ceramic supplies (large variety of clays, underglazes, glazes, raw materials, corks, tools, brushes, etc). Full range of heavy duty and ceramic art kilns.

Please ring for a quote on bulk orders direct from the manufacture.

SERVICE IS OUR NO 1 PRIORITY

*No order is too large or too small
(we can post up to 30kg anywhere in Tasmania for
\$4.75 inc GST)*

NEW CATALOGUE OUT NOW

Tony & Jan Mitchell

Ph 03 6395 4318 Fax 03 6395 4301

Email: tony@microtech.com.au

Profiles and photographs featured in the newsletters will also appear on our web page. If you do not wish your name and work to be on the Internet please contact the editor.

Studio Working Bee & Shared Lunch on 26th February

**WORKING BEE AND SHARED LUNCH
LEARN HOW TO USE THE SECURITY SYSTEM
AND THE KILN**

**SUNDAY FEBRUARY 26TH
10 AM (UNTIL 2 PM)
STUDIO AT COSGROVE**

Come and start the studio year by contributing to a general tidy up, sort out and organize. The studio belongs to all of us and some of you who haven't seen it may like to have an introduction to it in this way. Although the main focus will be on the clean up for those who are unfamiliar with the studio we can make an opportunity to have a run through the kiln operation, and the studio keys/alarm system. If you plan to use the studio this year please come along. Some names on the membership list are new to many of the members, so it would be great to meet you and see what you would like in the studio.

Bring a plate of something to share (finger food) and we will have a picnic lunch (outside, weather permitting).

Any enquiries phone Jude 62430195.

Can You Help?



Hi, my name is Linley

I have a piece of pottery that no one seems to be able to identify. It is an old vase in greens & blues with embossed flower & buds. The base has a large drawn cross with "gold cross pottery" printed into the clay then glazed over. Some one suggested it could be an early Tasmanian potter. I can't seem to find much on Tasmania potters. If you could help I'd be very grateful. Cheers

Linley O'Loughlin

linleyoloughlin@aapt.net.au

Arts Law Centre of Australia

The Arts Law Centre of Australia is the national community legal centre for the arts. Arts Law is a not for profit company which was established with the support of the Australia Council in 1983 to provide specialised legal and business advice and referral services, professional development resources and advocacy for artists and arts organisations.

Arts Law gives preliminary advice and information on a wide range of arts related legal and business matters including contracts, copyright, business structures, defamation, insurance and employment to artists and arts organisations across all art forms.

Arts Law's legal office provides telephone legal advice from Tuesday to Friday 9.30am-12.30pm and 2-5pm. The initial telephone advice is free and can be accessed by callers outside the Sydney metropolitan area on our toll free number.1800 221 457.

Annual Subscription Fee - \$90

www.artslaw.com.au

Email: artslaw@artslaw.com.au

Arts Law Centre of Australia

43-51 Cowper Wharf Rd, Woolloomooloo,
NSW, 2011

Derwent Ceramic Supplies

16B Sunderland St, Moonah

Ph: (03) 6278 3208

Fax: (03) 6278 3290

Need a spare rib?

Treat yourself to a long-lasting, self-burnishing
Sherrill Mudtool – now in stock!

Plus all the usual stuff ...

clays	glazes	underglazes	raw materials
tools	kilns & kiln furniture	firing service	pottery wheels

Open: Monday to Friday 9:00-5:00
Saturday only by arrangement

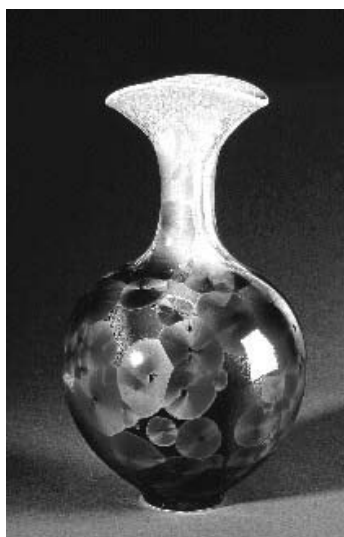
DIARY OF EVENTS

12 th February 930am-4pm	Raku Firing with Beres Collins Cap Ceramics 29 Funslow Rd, Collinsvale
26 th February 10am-2pm	Studio information session, working bee and shared lunch.
8 & 9 th April 9am-4pm	Ginny Conrow – 2 Day Intensive Workshop Potters Society Studio
1-14 th August	Tasmanian Potters Society Annual Exhibition Side Space Gallery

IMAGES FROM THE WORKSHOP PROGRAMME



Ginny Conrow



Ginny Conrow

MEMBERS

If you have any announcements, pictures, stories or anything of interest to publish please contact the editor

WORKSHOP IDEAS

Each year we are looking to develop an interesting and dynamic workshop programme. Sometimes we promote a theme and other times it's flexible. For 2006-2007 we are interested in a flexible and varied workshop programme. We like to have a balance between local ceramicists, national and international artists.

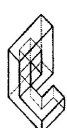
Do you have a passion for some aspect of ceramics? Would you like a specific person to come and give a workshop?

Please give you ideas to Yulia Szalay on 6228 4258 or Janine Davison on 6229 4365 / 0417 103 513.

LIBRARY

Ops sorry ... in the December Newsletter I said there was a \$10 fee for using this service but its FREE for members.

Jane



Entrepot Art Products

Tasmania University Union

- Ceramic Supplies, Clays, Glazes, Tools.
- Art Materials.
- Art Books.
- Cards.
- Decorative Papers.
- Expert Advice.

Centre for the Arts,
37 Hunter St, Hobart.
Ph: 6226 4313
Fax: 6226 4315

The editor reserves the right to edit or abridge material.

© Tasmanian Potters' Society (Southern Branch Inc)