



Tasmanian Ceramics Association

Tasmanian Ceramics Association

Issue 279
October 2007

Poseidon's porcelain

THE underwater world has been a big inspiration for Sandy Wrightson, this year's winner of the Tasmanian Potters' Society Exhibition's major prize.

"I used to be worried about what was lurking beneath the water's surface and was scared of seaweed touching my legs while swimming," she said.

"But while doing some snorkeling I began to look at the structure of seaweed and was captivated by its beauty.

"I now see kelp as aesthetically beautiful, not something to fear, and I even love snorkeling through the giant kelp forests."

Kelp floats were used to mould some of the beautifully shaped porcelain pendants and earrings featured in her collection Fluid Forms.

The unusual structure of seaweed and the way its stems elegantly branch are reflected in the silver sections of Sandy's work.

Clay is an unusual and rare material for jewellery, but Sandy loves its whiteness and smoothness, which makes for ease of moulding.

Sandy makes her jewellery light and comfortable to wear by using hollow porcelain moulds of just 2mm in thickness.

Fluid Forms, was Sandy Wrightson's inaugural exhibition of work with clay, having been introduced to ceramics less than two years ago.

Continued Page 3



INNOVATIVE: Sandy Wrightson's award winning porcelain jewellery.
Pictures: ROBIN ROBERTS



WORDS: Japanese inspired pendant and drop earrings.

Inside this issue:

President's Message	2
Exhibition Winners	3-5
Mould Making	7
Studio Familiarisation	7
New Committee	2
Membership Matters	2
AGM report	6

TCA Christmas Party

Saturday 1 December
6pm onwards
150 Strickland Ave
South Hobart

Bring a plate of festive food to share and BYO drinks

ALL WELCOME

More details in next newsletter

<http://members.tassie.net.au/~potters/>



Committee 2007/2008

President
John Watson
Ph. 6224 5809
john@dmink.net

Vice-President
Anna Williams
Ph. 6224 5809
dasgwil@bigpond.com.au

Treasurer
Janine Davidson
Ph. 6229 4365
janine.davison@education.tas.gov.au

Secretary
Paula Woodward
Ph. 6228 1709
Paula_hobart@yahoo.com.au

Workshop Coordinator
Jude Maisch
Ph. 6243 0195
terrafiesta@netspace.net.au

Exhibition Officers
Sallee Warner
Ph. 6224 1104
salleewarner@netspace.net.au

Anna Williams
Ph. 6229 5115
dasgwil@bigpond.com.au

Website manager & Public
Officer
Tom Hartley
Ph. 6239 6475
Hartley@southcom.com.au

Newsletter Editors
Henry Sheerwater
Ph. 6224 7439
sheerwater@tassie.ws

Kathy Grube
Ph. 6273 0318
kdgrube@internode.on.net

Auditor
Ian Ross

Mail Address
PO Box 82,
New Town, 7008

Website
<http://members.tassie.net.au/~potters/>

Committee meetings are held the first Tuesday of the month, 7pm, Tasmanian Ceramics Association studio at Cosgrove High School, Glenorchy. All welcome. Please ring John Watson for details.

President's greetings

By JOHN WATSON

HELLO everyone! I hadn't expected to be back in this role but unfortunately Beres Taylor has too much on his plate to continue as treasurer this year so at the AGM we were faced with the need for a cabinet reshuffle. Janine Davidson has taken up the treasurer's duties (bless her) and in the absence of other nominations, by default, I've taken up her previous role as president.

Beres will be sorely missed: he has been a backbone to the committee with his extensive knowledge of the society's history and his administrative skills, not to mention his unfailing cheerful presence at all our activities.

We're also sorry that Jane Tyler has too many responsibilities at present to continue editing the newsletters. We really appreciate the way she has sustained the newsletter production over the past few years and wish her all the best for her academic endeavours.

At the same time, we're delighted to welcome some new blood to the committee in the form of Kathy Grube and Henry Sheerwater, both of whom have jumped into the breach to pro-

duce this newsletter. I'm also pleased to welcome Jude Maisch back to the committee - her ideas and energy are always valuable. The 2007-08 committee members and their contact numbers are listed to this page.

As you'll be aware, we voted at the AGM to change our name from the Tasmanian Potters' Society (Southern branch) to the Tasmanian Ceramics Association, to reflect the fact that many of our members don't make pots. The change follows a trend adopted by similar organisations in other states as well as our umbrella organisation, the Australian Ceramics Association. It is likely that the Northern group will follow suit, in which case we'll append "Southern branch" to the new name.

Unfortunately our incorporation lapsed some time ago and in order to renew our incorporated status it has been necessary to draw up a more detailed constitution that conforms to the "model rules". Those of us who have read it can find no problems with it and unless members raise objections/queries we'll proceed to adopt it in due course. The document is published on our web-site (www.tassie.net.au/~potters) and I urge you to give it the once-

over and contact the committee if you see any problems with it.

Sad to say, our membership has dropped markedly over the past few years. This is due at least in part because many who consider themselves to be members are not in fact financial. There is a membership renewal form below and we urge you to line up, sign up and re-enlist. If you can also sign up a friend as a new member, so much the better! Much of our activity is funded by membership fees and without them we would be unable to retain the studio facilities and the activities they support.

Upcoming activities in the next few months include a workshop get-together at the studio which will be especially useful to members who don't yet know how to program the kilns but which will also include skill-sharing by a variety of our members. Dawn Oakford will be conducting a workshop on plaster mould-making for slip-casting on the 4th and 11th of November and I'll be hosting a raku-firing day at my place in January. Other activities are in the pipe-line, to be revealed in due course. Needless to say, we are always keen to have members' suggestions about potential activities.

MEMBERSHIP SUBSCRIPTION FORM

- Full Membership for 12 months from 1st July - 30th June : \$40
- Student (must be Fulltime) Membership from 1st July - 30th June - \$20
- Group Membership from 1st July - 30th June - \$50
- Associate Membership (no Newsletters sent) from 1st July - 30th June - \$20

Name:.....

Postal Address:.....

.....

Email.....

Telephone.....

Please post cheque or money order to: Tasmanian Potters' Society (Southern Branch), PO Box 82, NEWTOWN, 7008, Tasmania.



Tasmanian Potters'
Society
Annual Exhibition
and Awards
2007

Tasmanian Pottery &
Ceramic Supplies
Award for Excellence (\$300)
Sandy Wrightson
Fluid forms

Derwent Ceramic Supplies
Highly Commended Award
for Non-Functional Ceramic
(\$250)

Christine Crisp
Transience

Northcote Pottery Supplies
Highly Commended Award
for Functional Ceramic
(\$250)

Cath Wyllie
Indigo Vase

Australian Journal of Ceram-
ics Award for Innovative Use
of Materials (magazine sub-
scription)

Henry Sheerwater
Green Man

Ceramics Art & Perception
& Ceramics Technical recog-
nition award (magazine sub-
scription)

Yulia Szalay
Bluegum on Southern Ice

Artery Award for Student
Work (\$50)

Stephanie Pfenningworth
Gentoos

Walker Ceramics People's
Choice Award (\$50)

Jackie Senior
Pulp Tourism

Winners

THE Tasmanian Potters' Society Annual Exhibition attracted 51 entries and showcased innovative techniques by Tasmania's talented ceramicists.

The volunteers who manned the exhibition received positive comments from gallery viewers and many exhibitors sold their work to both individuals and galleries. It was also fantastic to see the high quality work of first-time entrants.

Visitors to the exhibition held in the Sidespace Gallery between 1-12 August included locals and tourists.

The Tasmanian Ceramics Association committee is currently negotiating a date for next year's exhibition.

Thank you to the organisers Anna Williams and Sallee Warner, photographer Robin Roberts and the many other people who assisted to create a dynamic and diverse exhibition.



COMMENDED:
Transience (above) by
Christine Crisp.

COLLECTABLE:
Gentoos (left) by
Stephanie
Pfenningworth.

Pictures: ROBIN ROBERTS

Poseidon's porcelain

From Page 1

ALTHOUGH a relative newcomer to ceramics, the West Hobart jewellery artist already has a strong reputation in the contemporary jewellery field, with pieces at Salamanca's Handmark Gallery, Saddler's Court Gallery in Richmond and Launceston's Design Centre.

She has been delighted by the welcoming culture of potters and their willingness to share knowledge and ideas.

"In some fields artists prefer to keep their techniques or tips a secret because they consider other artists to be competitors," she said.

"I have found ceramic artists to be very open and happy to

share their knowledge."

Sandy said entering the Tasmanian Pottery Society Exhibition was nerve-wracking.

"I am stepping into a new field and to get such positive feedback about my work in the exhibition has boosted my confidence and made me feel that what I am doing is OK."

Sandy has always had a passion for crafts and textiles, but it was after undertaking some specialist jewellery courses through Tafe, that she discovered her strong interest.

While she would love to be able to work full-time on her jewellery, Sandy continues in her first career in IT and computer programming to bring in a regular income and spends

evenings in her garage studio that she shares with her partner, an avid wood craftsman.

While looking for a new challenge after studying courses in jewellery making, Sandy enrolled in a class run by local potter Anna Williams.

"Anna was very supportive and made me feel free to try new things and experiment with the clay," she said.

Sandy has experimented with making different moulds and loves creating smooth and fluid tear-dropped shapes.

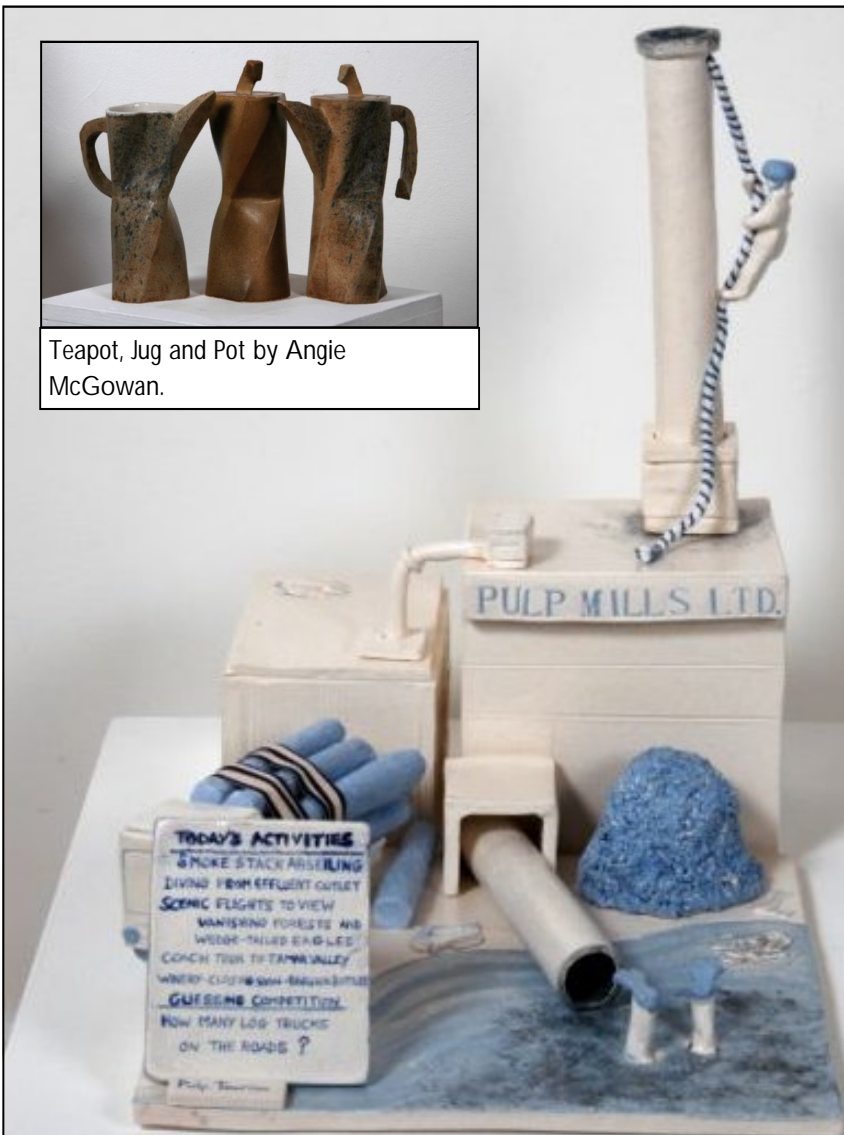
She bought a second-hand kiln from a dental technician practice in North Hobart, which she uses for casting jewellery in silver and it is also working well for clay firing.



Teapot, Jug and Pot by Angie McGowan.



Sea Dreams by Adela Taylor.



Pulp Tourism (above) by Jackie Senior.



Tomorrow by Peter Anderson.



Footed Bowl (left) by Shirлие Bond.

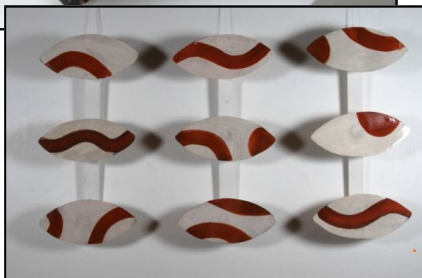


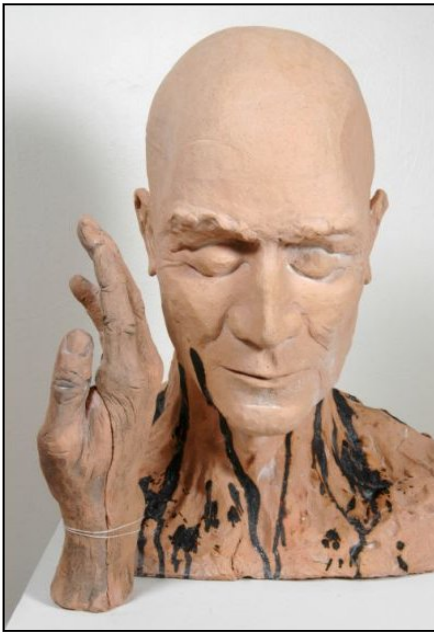
Latitude #3 (above) by Deborah Warner.



Babuska Boxes (right and above) by Jude Maisch

Pedro (right) by Sallee Warner.





Green Man (above)
Henry Sheerwater.



Family 1 (above) by Christina
Fiotakis.



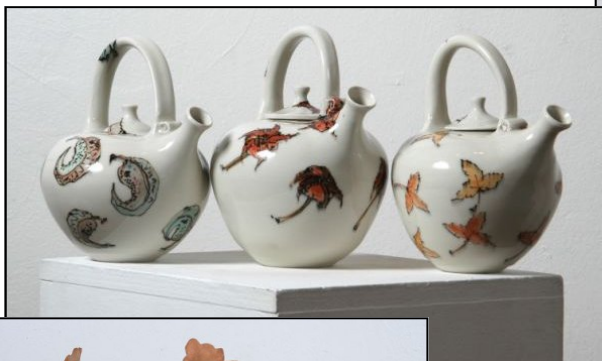
Indigo Vase (above) by Cath Wyllie.



Unpeeling the Layers (above) by Sue Stack.



Bluegum on Southern Ice (above) by Yulia Szalay.



Winter T Pots (left) by
Anna Williams.



Three of a Kind by Tom Hartley.



Landscape with Figures by Edna Broad.



Hill Village I (above) by John
Watson.



Annual report 06-07

By JANINE DAVISON

The 2006 / 2007 year has been a very busy and productive one for the Potters Society.

September saw a very dynamic Aden McLeod from Devonport lead a sculpture workshop making head and shoulder busts, beginning by slapping fine slabs of clay around wooden armatures and then refining the shapes and details.

In November twenty potters & partners visited the Tasman Peninsula in a very popular stickybeak tour to the homes and studios of Sally Curry and Eve Howard, followed by lunch at the Waterfront Café at Dunalley. Both Sally's and Eve's work was inspirational in how it responded to and incorporated aspects of the beautiful environment of the Tasman Peninsula.

Thanks to Anna Williams and her family for hosting the Christmas get-together in December at their home at the Lea. A large number of Potters Society members and friends lounged in the sun and enjoyed a convivial celebration of the year.

2007 workshops began with the very popular January raku firing at Collinsvale, led by Beres Taylor and John Watson.

This was followed quickly in early February by an inspiring narrative tile weekend workshop with internationally renowned ceramicist Matthias Ostermann. Hosting international artists can be quite a stretch financially, but this workshop was definitely worthwhile with all participants appreciating Matthias' excellent teaching skills as well as his skills as a ceramicist. Thanks to Jude Maisch and her family for hosting Matthias.

Responding to popular demand, a second raku workshop was held in April at Collinsvale, and in May Christine Crisp opened her studio and shared tips and techniques of working precisely with decorated slabs. Participants had the chance to make roulades of their own (where I discovered that working neatly and precisely was not always easy!), and to enjoy a refreshing and inspiring day together.

In July a group of 6 southern potters travelled to Ross for a show and tell, shared lunch and discussion with northern potters about ways that we could work together to promote ceramics in Tasmania.

Of course August brought us around to the 35th Annual Exhibition – a wonderful celebration of creativity and versatility in the medium.

When you add to this load of organisation the monthly meetings, newsletters and

website, you realise just how busy the committee has been. Fortunately you couldn't have a better committee with members who always put up their hands for jobs and who are also fun to spend time with. I would like to thank Sallee Warner for kindly opening her home in South Hobart for us for meetings on a number of occasions, as a change from the winter studio space in particular. I should also thank Sallee's husband Pete for being patient when encouraged to go elsewhere to make room for us!

At this point I would like to thank all the committee members, specifically recording thanks to those members who had particular roles:

Paula Woodward – took on the role of both minutes secretary and secretary and honestly I don't think either of those things could have been done any better. Paula is always efficient and generous with her time. She has helped us iron out some of the bugs in our membership process as well – hopefully all running smoothly now.

Jane Tyler – our incredible newsletter editor – has almost been invisible this year under her workload of doing honours and being a mother as well. But despite a load that already required superhuman efforts, Jane has continued to produce newsletters, even when the notice was rather short.

Anna Williams and Sallee Warner have done a wonderful job as workshop organisers, as well as taking on the demanding role of exhibition organisers. They are both incredibly creative people, able to look 'outside the square' and come up with innovative ideas of things to try, ways forward, ways of making a seeming negative actually be a positive. And on top of this they both have a wonderful sense of humour!

Tom Hartley has been our website manager and public officer, and also facilitated the addition of work from Northern Tas potters in the annual exhibition again. This has been an important innovation that was finally successful this year, and enhanced our exhibition as well.

Beres Taylor has given a huge amount to the committee over quite a few years, this year as treasurer. Beres has put us on a business-like footing, initiating the use of a digital banking system to keep track of our finances and the investment of some of our money to improve the yield. Beres leaves the committee at this point to take on a more demanding volunteer position in Rotary – which is not to mention his role supporting Adriana as Mayor of Glenorchy and running his own studio and business

interests. Thanks very much for everything Beres – we hope that you continue to keep tabs on what we are doing and come along to the occasional event that interests you.

John Watson is another committee member who has occupied many roles on the committee and always steps up to do what needs to be done, with the minimum of fuss and the maximum of efficiency. As President this year, I have had complete support from all the committee, but especially appreciated John's advice as the deputy president.

The Cosgrove studio continues to be a very valuable asset with a much increased use of the kiln showing how much that service is valued by members.

In the third term, 2006, classes continued to be held on Monday evenings in our Cosgrove studio, taken by tutors Jude Maisch and Suzi Tyson. However numbers were not sufficient for these classes to continue in 2007. I believe that this is not confined to the Potters Society however, as a number of adult education classes were not able to continue either. I would like to record our thanks to both Jude and Suzi for their efforts as tutors over the years. The income generated for the Society was very welcome, but more than that, they were often the first introduction to pottery for people who later joined the society as new members.

Once again I would like to thank everyone for a very successful year, and for your company and good will. I am stepping down as President to take on the role of Treasurer, and would like to welcome John Watson back to the role of President and to encourage all Potters Society members to become actively involved in the "Tasmanian Ceramics Association" in 2007-2008.

Octopottery

A SOUTH Korean fisherman has reportedly discovered a precious haul of ancient pottery – thanks to an octopus, which attached its suckers to a plate.

Kim Yong-Chul caught more than he bargained for when he went fishing earlier this year, according to the website of the Chosun Ilbo newspaper.

Shards of ancient celadon pottery were attached to the suckers of several webfoot octopuses, which he netted. One was stuck to a complete plate dating back to the Koryo Dynasty, which ruled the peninsula from 916 to 1392.



Mould making workshop

RENOWNED ceramicist Dawn Oakford will run a two-day mould making workshop in November.

Dawn's angular and asymmetrical work is highly sought by collectors

The workshop is ideal for those with little or no prior experience in mould-making and slipcasting, but is also recommended to those wishing to develop, refine and add to their existing moulds.

While giving particular emphasis to strong, faceted/textured forms, Dawn will cover the production of models (3D patterns or prototypes), simple "drop" moulds, moulds of natural objects and mould components for the creation of functional and sculptural objects.



Thylacine Jug by Dawn Oakford

Basic equipment

Please bring along any of the following that you may already have in your workshop or home.

- Mask
- Handy or Rubber Gloves for protection when mixing plaster
- Jar for Soft Soap
- Brush for above (old shaving brushes are ideal)
- Sponges, Towels
- Bands cut from Inner Tubes
- Vegetable Knife
- Set Square
- Ruler
- Pencils
- Surform rasp + blades
- Wood carving chisels (small sets are available at Chickenfeed)
- An old teaspoon
- Wet & Dry sanding paper (various grades)
- Smooth, white Clay (recycled is fine)
- Lengths of Dry Cleaning Plastic
- Small Level (optional)

Details

Venue: Tasmanian Ceramics Association studio, Cosgrove High School, Glenorchy.

Date: Saturday 4th & Sunday 11th November 2007

Time: 10am – 4pm.

Fee: \$60 (members) \$80 (non-members)
(Please note that the fee covers the two sessions and attending on one day only is not a meaningful option)

Enrolments and enquiries

Contact John Watson 6224 5809 (evenings) or 6245 8046 (Mon, Wed, Thurs, mornings) or email john@dmink.net



Dawn Oakford's Mondrian musings

Introductory studio and kiln workshop

IF you have never been to the studio here is your chance.

Do you want to learn how to use the alarm, the kiln, the slab roller and do you want to know your way around the studio? Do you want to watch a throwing demonstration, with some special "troubleshooting" requests?

Would you like to meet other members, perhaps with a view to organising going to the studio on a regular/irregular basis together or just talk to other ceramicists? Any or all of the above.?

The recent survey indicated that there are many of you who would say yes to at least one of those things. This is your opportunity.

SUNDAY 2 December, 11am-3pm in the Studio (G Block Cosgrove). The programme is roughly as follows, so that if you want you can just come for the kiln demo and lunch, or the whole day, or just the throwing, meet others and look in the library and lunch, or just lunch and the afternoon, what ever suits you.

Program

11am: How to get into the studio, do the alarm, (practice), a general look about. (John Watson).

11.30am: Throwing demo (Mark Knight). Come along with some special requests. Trouble-shooting.

12.30pm: Lunch. Everyone bring a plate (of food to share).

Looking at studio pot collection and library, photos of old workshops (Jude Maisch) during and after lunch.

1.30pm: How to use the kiln. Packing and programming. Firing.(Jude)

2.00pm: Using the slab roller. (John).

Free Kiln

Suitable for potter or sculptor. A beautiful catenary arched kiln to be given as gift if removed by recipient. Brick mortar is clay. Shelves and burners may be purchased. Interior Dimensions: height 1670mm, depth 930mm, width at base 1104mm. Contact Carol on **6229 3169** for details.

Cost of the workshop is \$5. Bring a friend (who may even wish to join the Association).

Please phone Jude to let us know if you will be attending for morning, lunch or afternoon sessions, or for the full day.

Phone 6243 0195 or email: terrafi-esta@netspace.net.au

Flat Bed Scanner

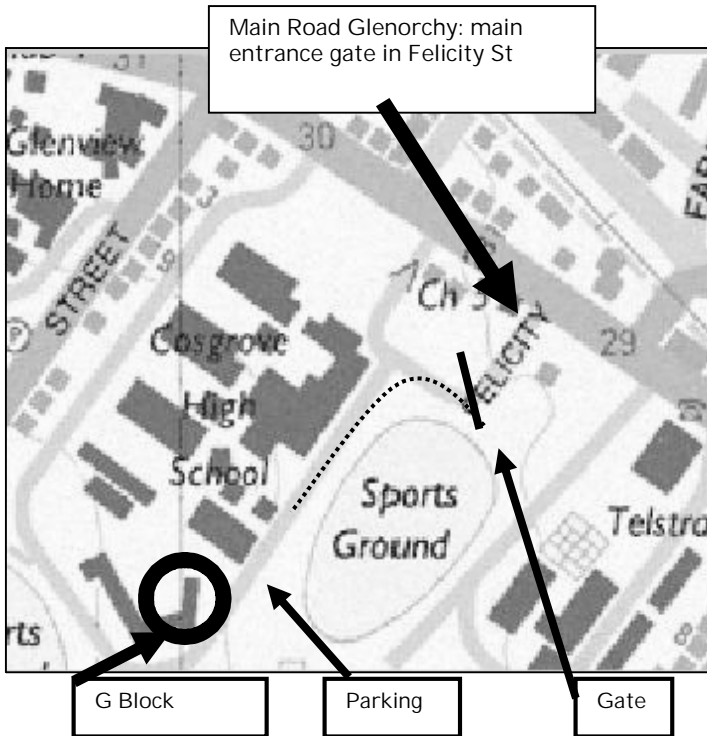
Canon FB 630P (works off parallel port on PCs only) in exchange for a pack of Raku Clay.

Tom Hartley Ph 6239 6475

Wanted Electric Kiln

Wanted to buy small electric kiln, suitable for enamelling.

Contact Ella 6234 5397.



TCA studio at Cosgrove High School

THE Tasmanian Ceramics Association studio at Cosgrove High School is a fantastic resource for ceramic artists.

The fully-equipped studio has wheels, slab rollers and a kiln, which can be booked.

The studio has also provided a venue for pottery classes, which is something the TCA committee would like to see resurrected.

Jude Maisch has organised a studio familiarisation workshop on December 2. She will be joined by Mark Knight and John Watson, who will demonstrate their skills.

Entry is via the main gate in Felicity St, next to Motors Car Yard and come up the road to G block circled on the map. Alternatively park in front of the admin block at Cosgrove and walk up through the covered walk to the back to G block.

Booking for the kiln and keys are available at
Derwent Ceramics

16B Sunderland St, Moonah Ph: (03) 6278 3208

Derwent Ceramic Supplies

16B Sunderland St, Moonah

Ph: (03) 6278 3208

Fax: (03) 6278 3290

We stock all the usual stuff ...

clays glazes underglazes raw materials
tools kilns kiln furniture pottery wheels
firing service books and videos to borrow

Opening Hours for this week (8-12 October)

Open: Monday, Wednesday and Friday 10am – 3pm

*Until October 15, the keys to the Cosgrove studio, and the firing book to reserve kiln space, are available at OffCentre at 77 Salamanca Place (up the stairs opposite the Long Gallery). OffCentre is open 7 days a week, 10am-5pm. Their phone number is 6224 8075.

Monday, 15 October onwards

Open: Monday to Friday 9:00 – 5:00
Saturday by arrangement

26th Gold Coast International

CERAMIC ART AWARD

up to \$15,000

in awards and acquisitions

ENTRIES CLOSE

Friday May 30 2008

Exhibition 16 August to 19 October 2008

The Gold Coast International Ceramic Art Award is an acquisitive art award and exhibition, open to all ceramic art forms. The competition is open to artists from all countries. Works chosen for the exhibition at Gold Coast City Art Gallery will be selected by the judge from photographs or jpegs submitted with the entry. Selected artists will be invited to submit works of art for exhibition and consideration by the judge for acquisition. The Winner will receive \$10,000 and that work will be acquired for the Gold Coast City Art Gallery collection. The judge will select further acquisitions up to the value of \$5,000 for Gold Coast City Art Gallery collection. Details on the website at www.ceramicartaward.com/